



## Features & Amenities

### Include:

- \* Hardwood Floors
- \* Black Appliances
- \* Carpeting
- \* Ceramic Tile in Wet Areas
- \* Crown Moulding
- \* Granite Countertops
- \* Spacious Closets
- \* Vaulted Ceilings
- \* W/D Connections
- \* On-Site Laundry Facilities
- \* Clubhouse
- \* Fitness Center
- \* Internet Computer Lab and Library
- \* Garages Available \*

\* In Select Homes

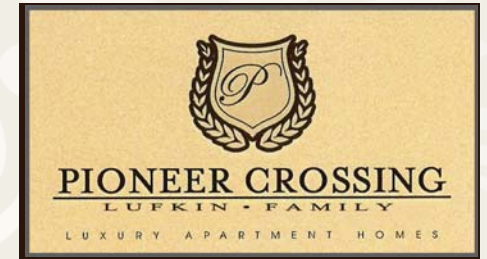
## Enhanced Living

Welcome home to an enhanced living environment you're sure to love! Our exquisite apartment homes satisfy your every need. From luxurious floors, to granite countertops and stainless steel appliances...you won't be disappointed.

Be sure to check out our awesome Clubhouse, Fitness area, Business Center and Picnic Areas! We have something for everyone here at Pioneer Crossing - Lufkin!

Welcome Home to Pioneer Crossing - Lufkin!

1805 N. John Redditt Dr.  
Lufkin, TX 75904  
(936) 238-3983  
(936) 238-3984 (Fax)



## Exquisite Apartment Homes

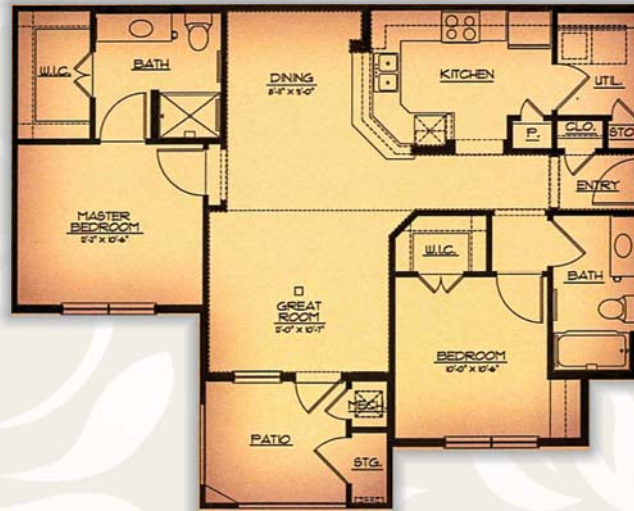
**(936) 238-3983**

[www.pioneercrossinglufkinapts.com](http://www.pioneercrossinglufkinapts.com)

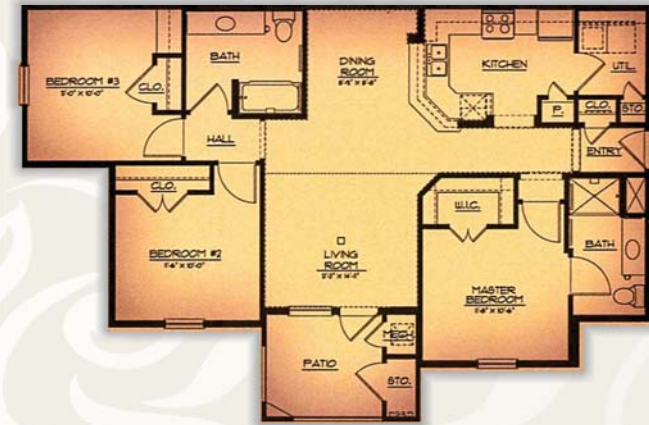
# Enhanced Family Living



**A1** One Bedroom / One Bath  
750 Sq. Ft.\*



**B1** Two Bedroom / Two Bath  
1,000 Sq. Ft.\*



**C1** Three Bedroom / Two Bath  
1200 Sq. Ft.\*

All room dimensions & square footages are approximate



Professionally managed by:

ALPHA-BARNES  
REAL ESTATE SERVICES



[www.pioneercrossinglufkinapts.com](http://www.pioneercrossinglufkinapts.com)