



## Features & Amenities

### Include:

- \* Hardwood Floors
- \* Black Appliances
- \* Carpeting
- \* Ceramic Tile in Wet Areas
- \* Crown Moulding
- \* Granite Countertops
- \* Spacious Closets
- \* Vaulted Ceilings
- \* W/D Connections
- \* On-Site Laundry Facilities
- \* Clubhouse
- \* Fitness Center
- \* Internet Computer Lab and Library
- \* Garages Available \*

\* In Select Homes

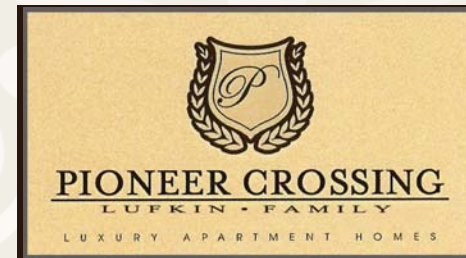
## Enhanced Living

Welcome home to an enhanced living environment you're sure to love! Our exquisite apartment homes satisfy your every need. From luxurious floors, to granite countertops and stainless steel appliances...you won't be disappointed.

Be sure to check out our awesome Clubhouse, Fitness area, Business Center and Picnic Areas! We have something for everyone here at Pioneer Crossing - Lufkin!

Welcome Home to Pioneer Crossing - Lufkin!

1805 N. John Redditt Dr.  
Lufkin, TX 75904  
(936) 238-3983  
(936) 238-3984 (Fax)

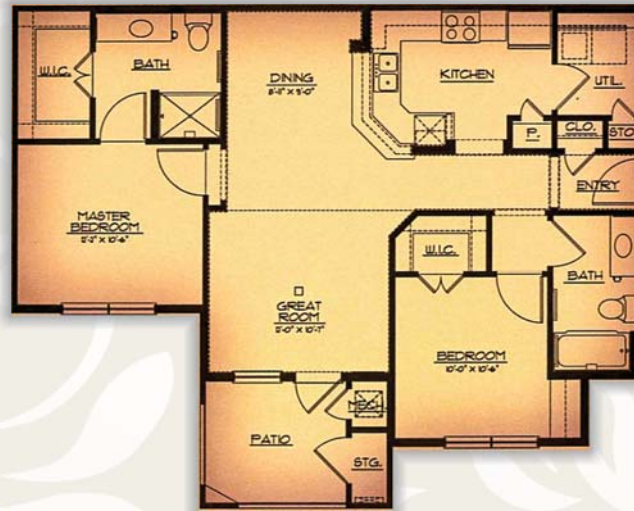


## Exquisite Apartment Homes

**(936) 238-3983**

[www.pioneercrossinglufkinapts.com](http://www.pioneercrossinglufkinapts.com)

# Enhanced Family Living



**A1**

**One Bedroom / One Bath**  
750 Sq. Ft.\*

**B1**

**Two Bedroom / Two Bath**  
1,000 Sq. Ft.\*

**C1**

**Three Bedroom / Two Bath**  
1200 Sq. Ft.\*

Professionally managed by:

**A B**

**ALPHA BARNES**  
REAL ESTATE SERVICES

All room dimensions & square footages are approximate



[www.pioneercrossinglufkinapts.com](http://www.pioneercrossinglufkinapts.com)